

Provincia di Chieti
Settore 5
SERVIZIO EDILIZIA SCOLASTICA E PROVINCIALE

PROGETTO ESECUTIVO

OGGETTO: AMPLIAMENTO E RISTRUTTURAZIONE DELLA BIBLIOTECA PROVINCIALE "A.C. De Meis" di CHIETI LOTTO
Lavori di adeguamento sismico edificio esistente e messa in sicurezza area

ELABORATO: **MESSA IN SICUREZZA AREA**
-PARTICOLARI COSTRUTTIVI

IL DIRIGENTE E RESPONSABILE LAVORI DEL PROGETTO:
Dott. Ing. Carlo CRISTINI

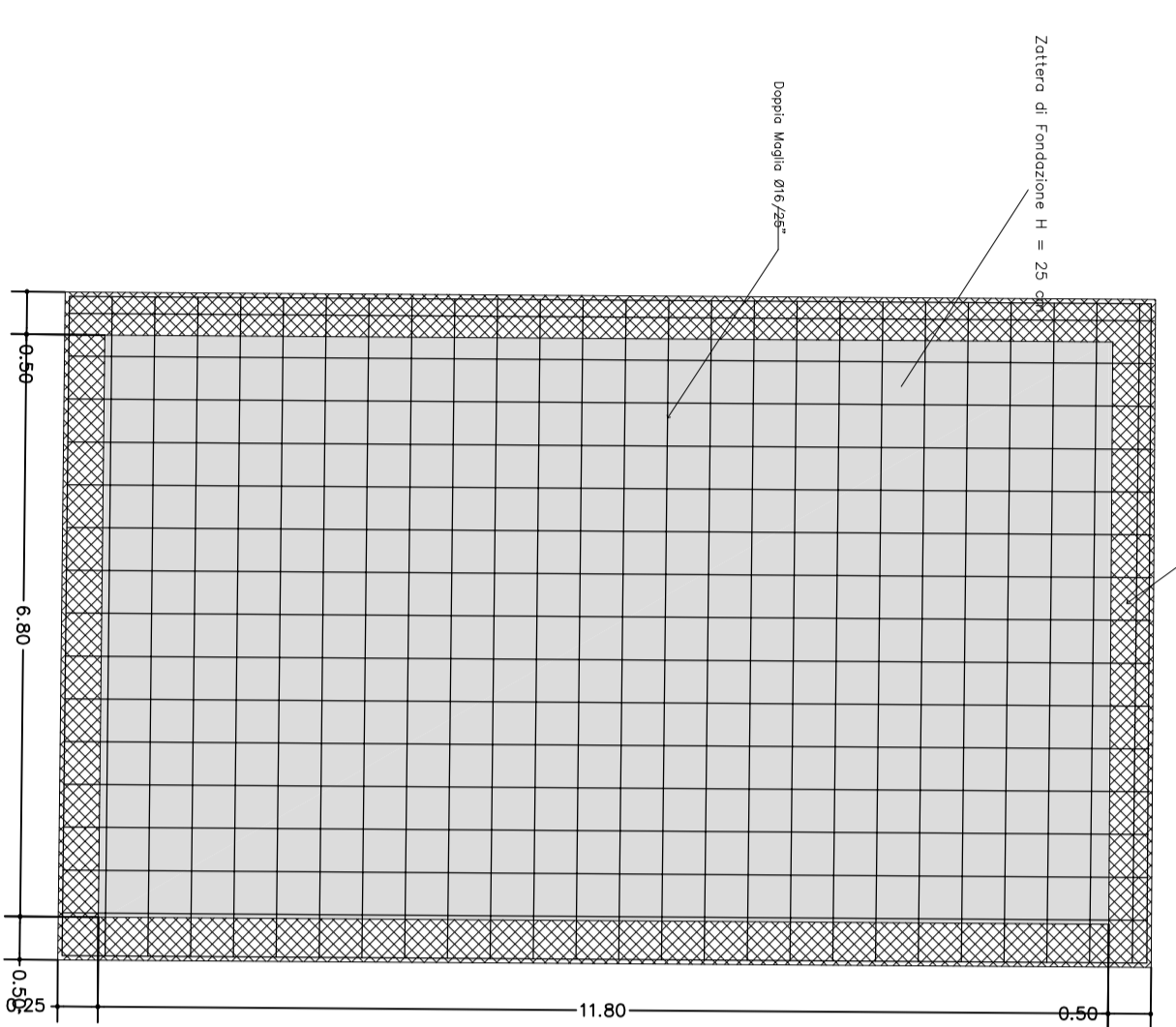
PROGETTISTA E D.L.:
Dott. Ing. Roberto MAMMARELLA

ELABORATO: A.6.9

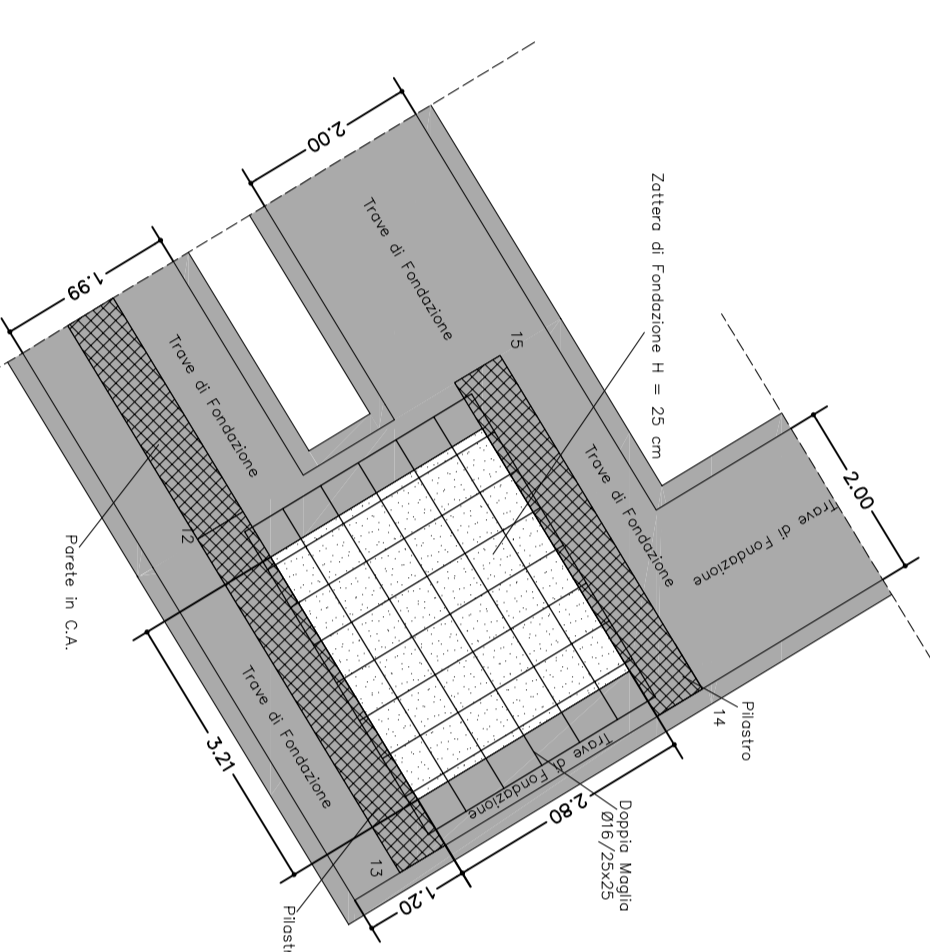
SCALE TRAVI VARI

OGGETTI

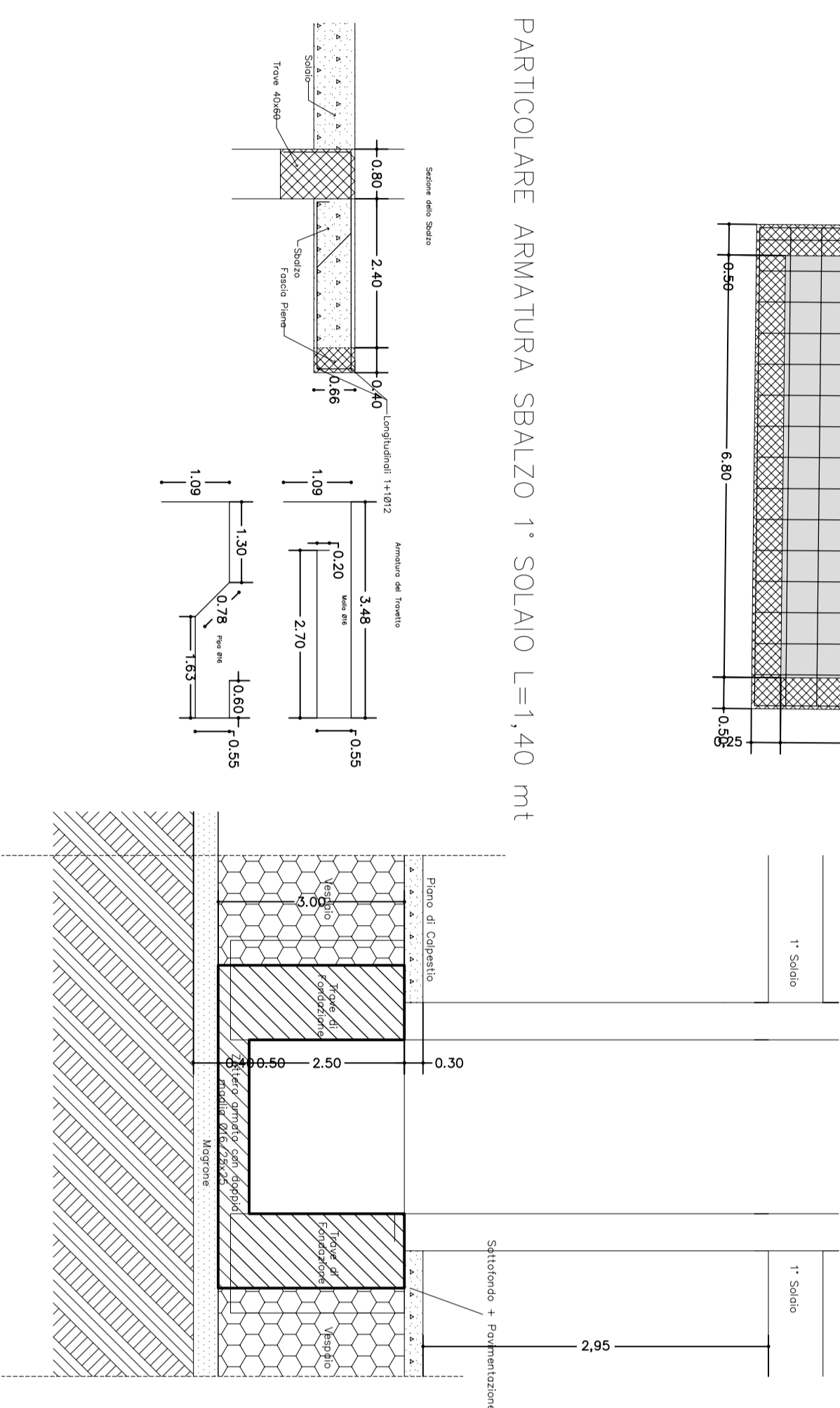
Particolare Armatura Vasca Antineendio



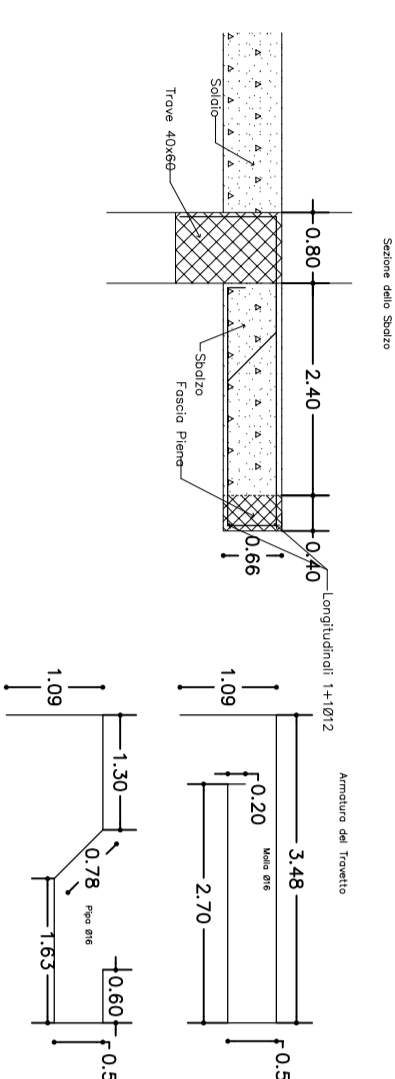
PARTICOLARE ZATTERA DI FONDAZIONE VANO ASCENSORE



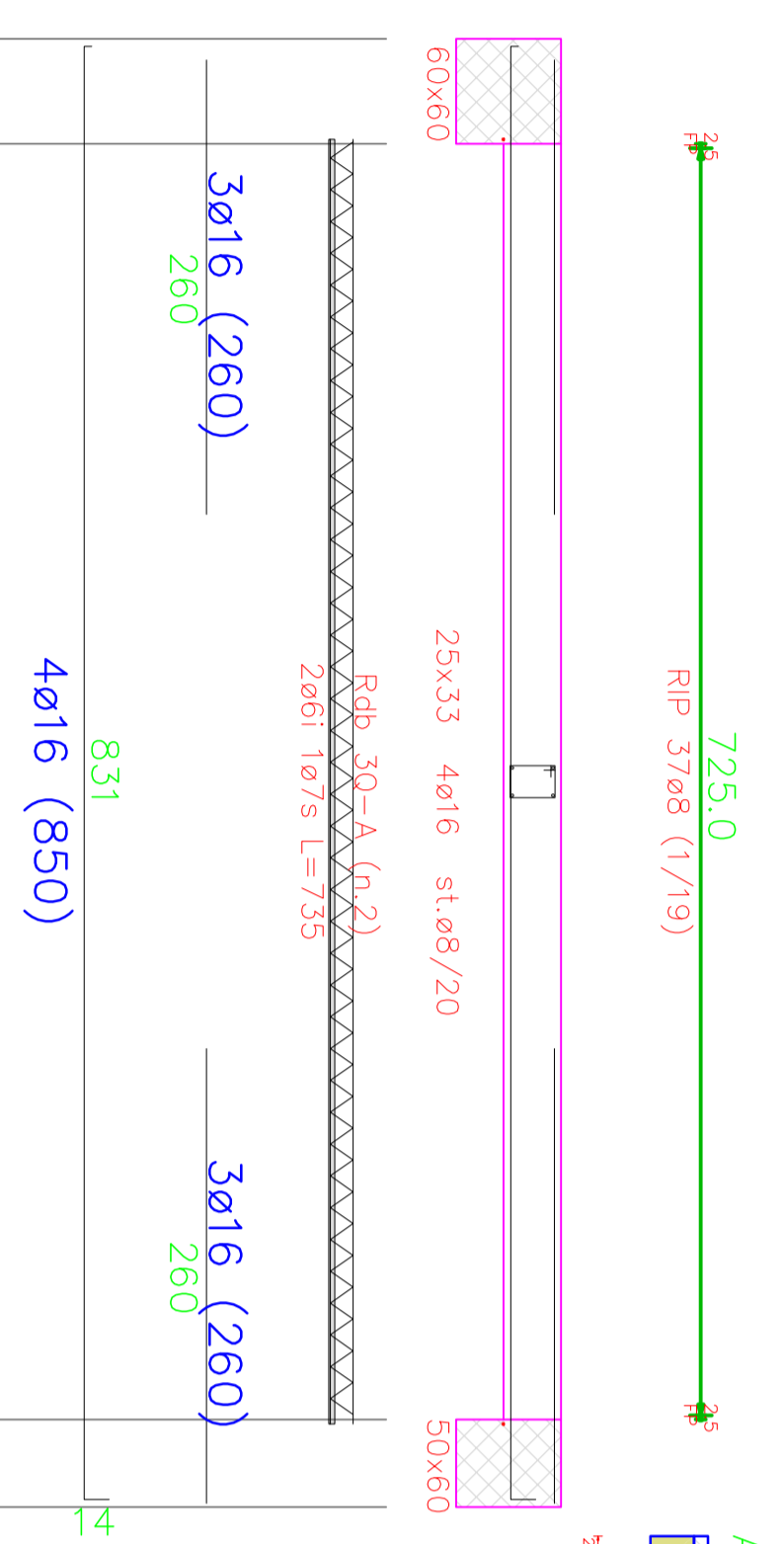
PARTICOLARE EXTRADUOTA VANO ASCENSORE



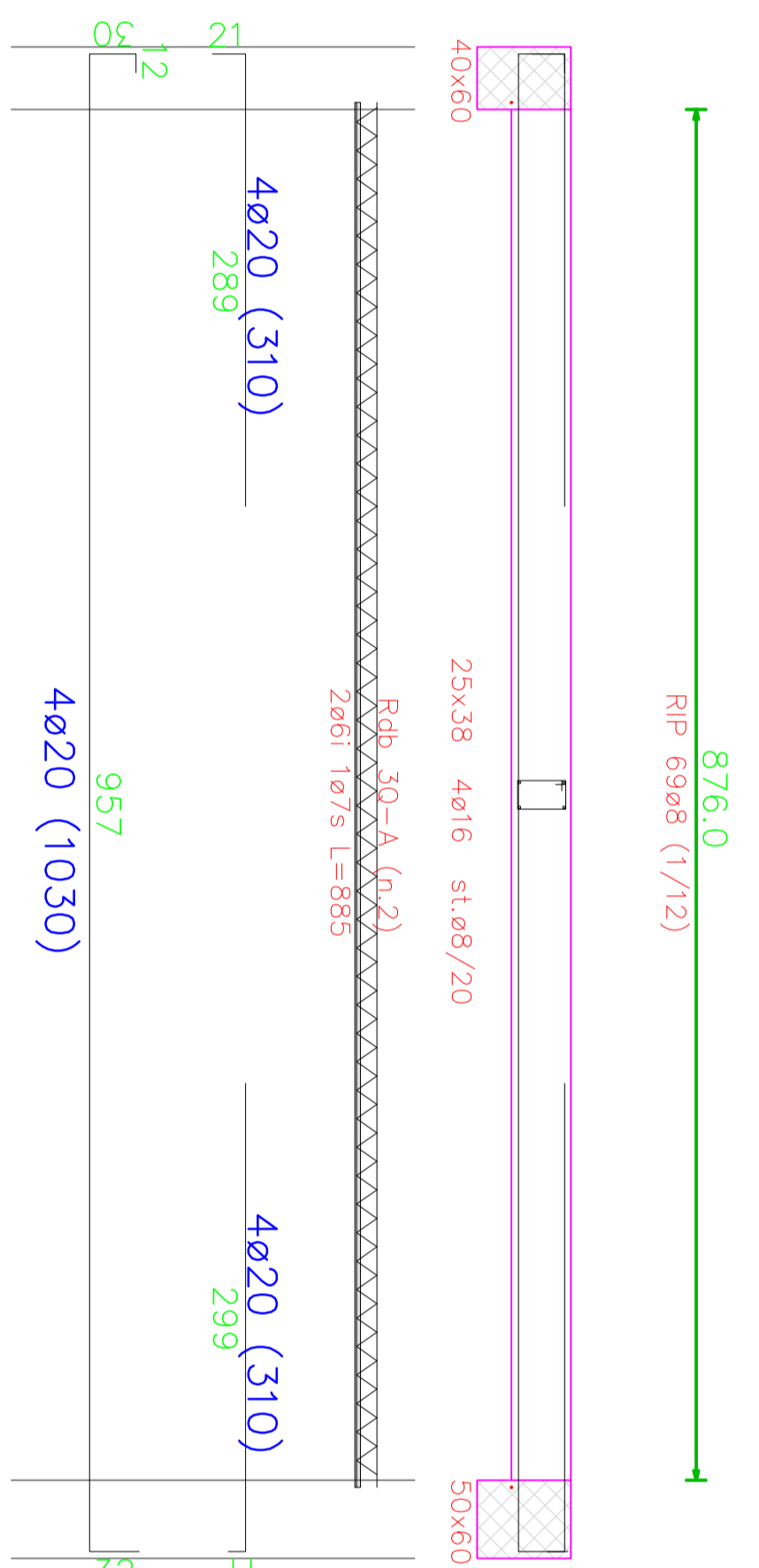
PARTICOLARE ARMATURA SBALZO 1° SOLAIO L=1,40 mt



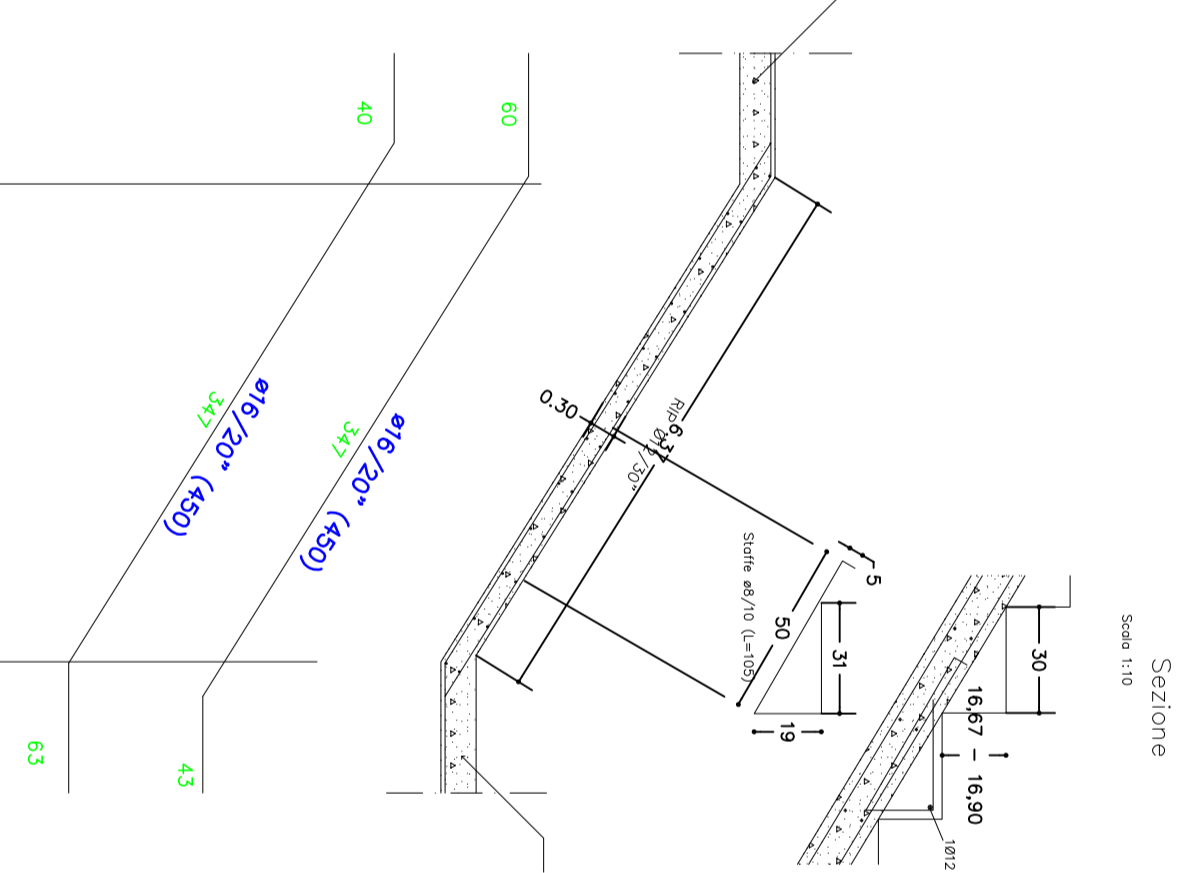
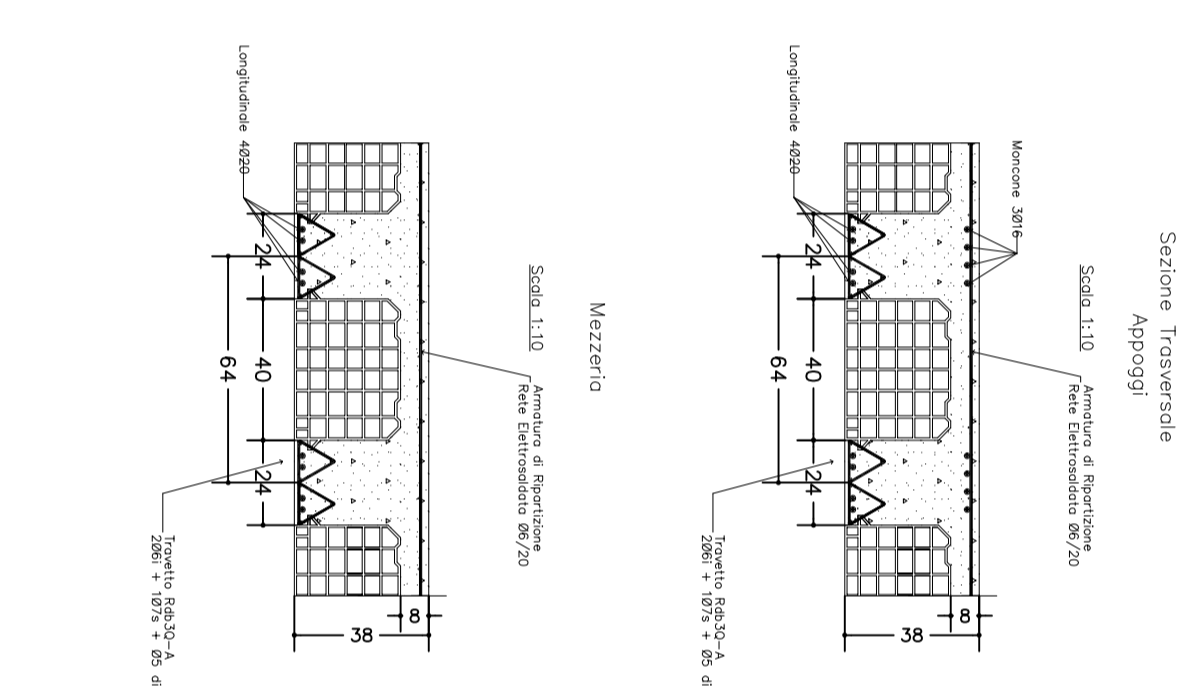
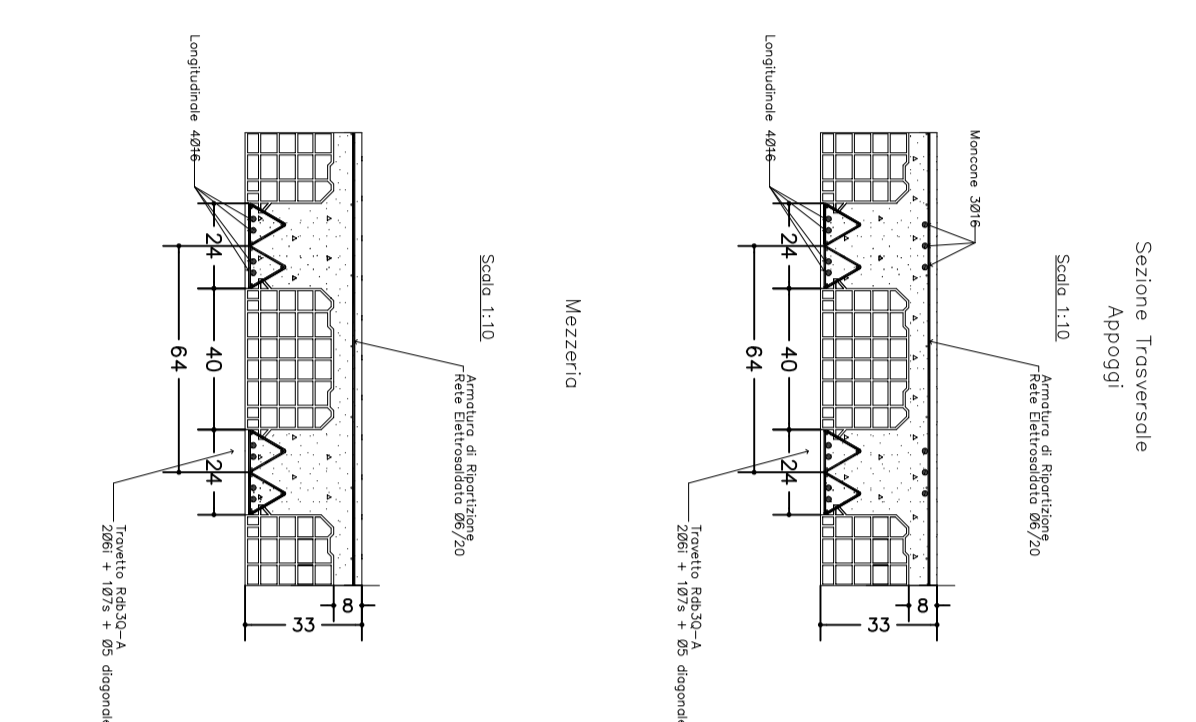
Particolare Armatura nel travetto
— Solido Tipo S = 33 cm



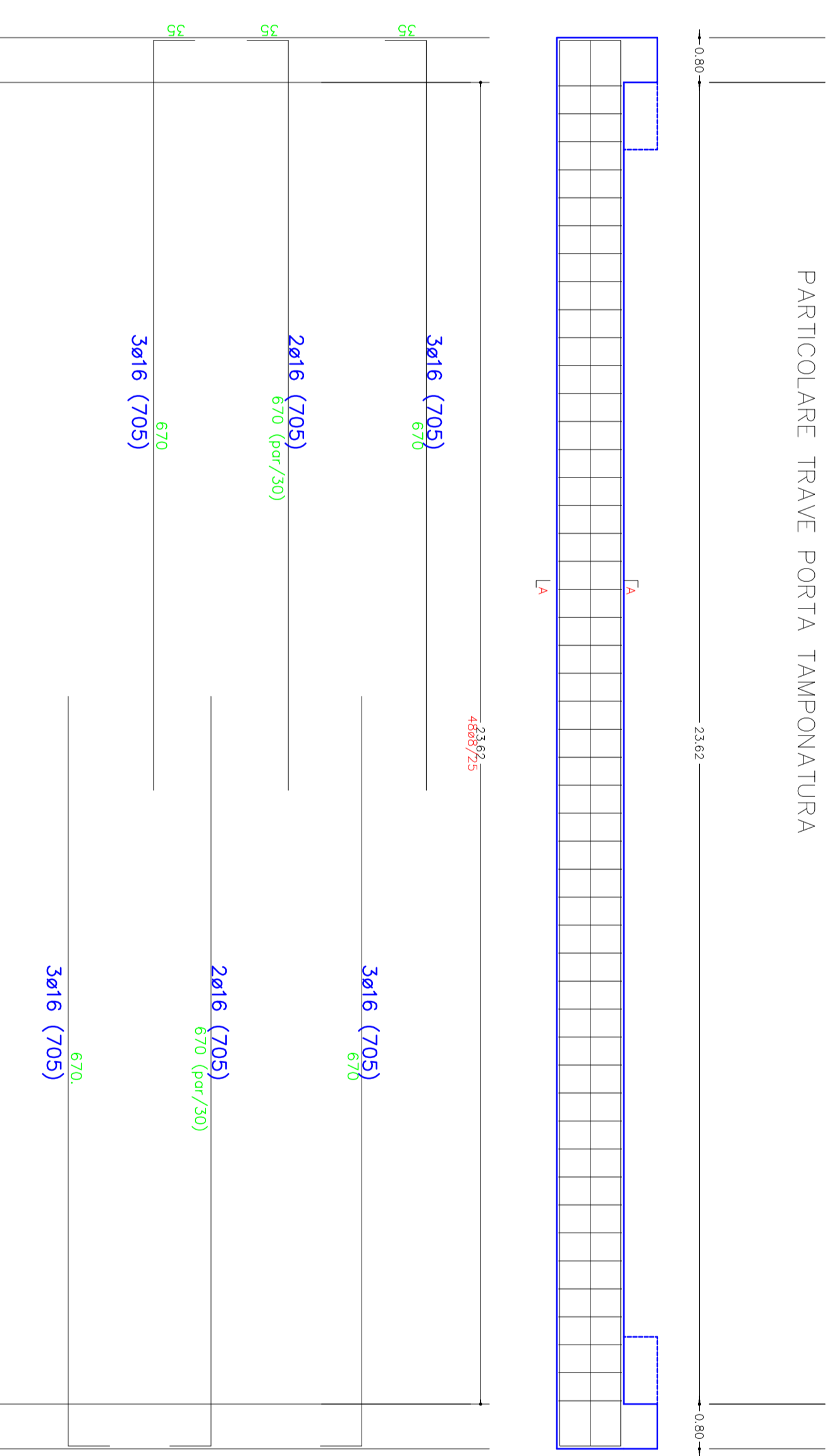
Armatura nel travetto



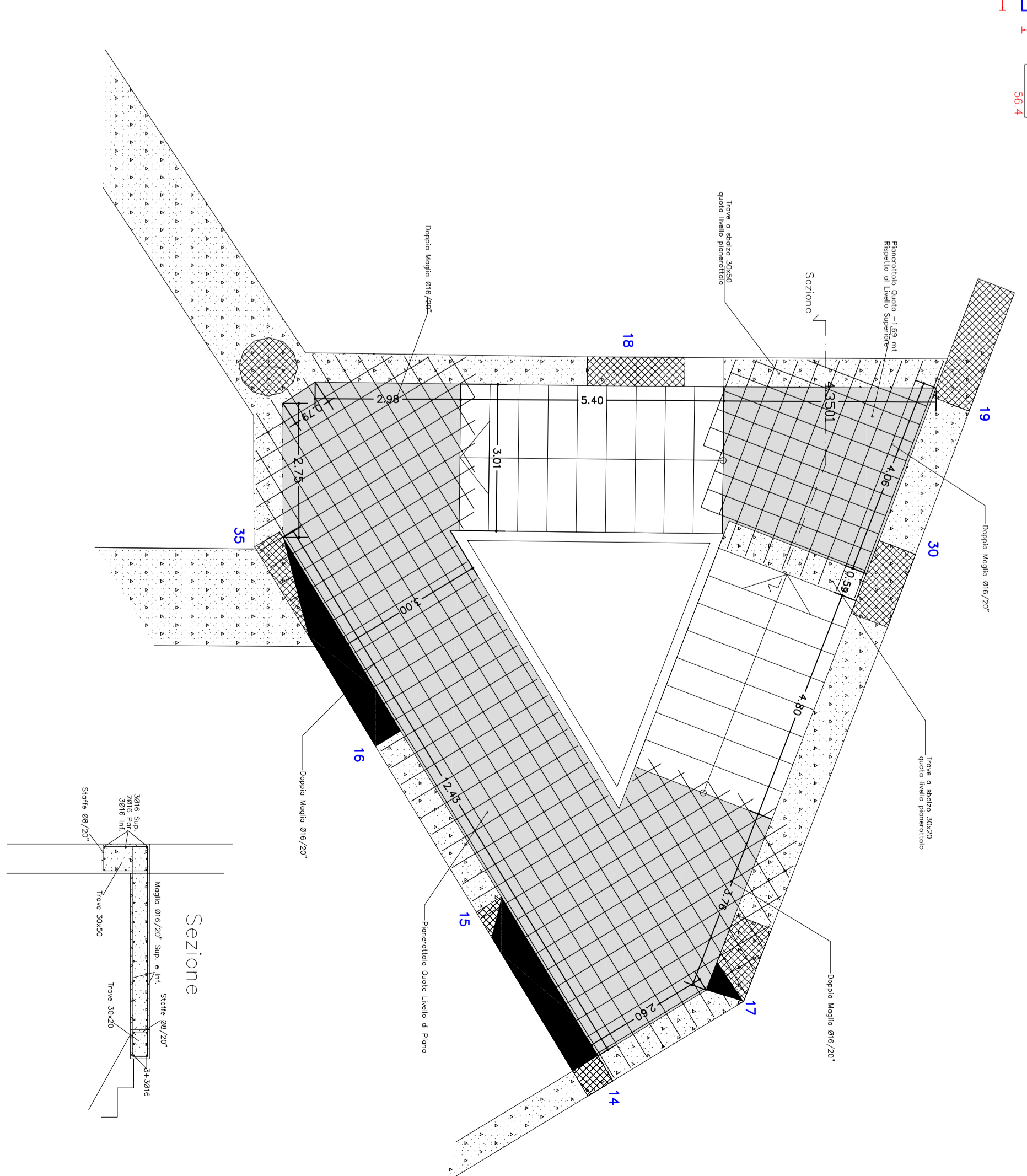
PARTICOLARE RAMPA SCALA TIPO



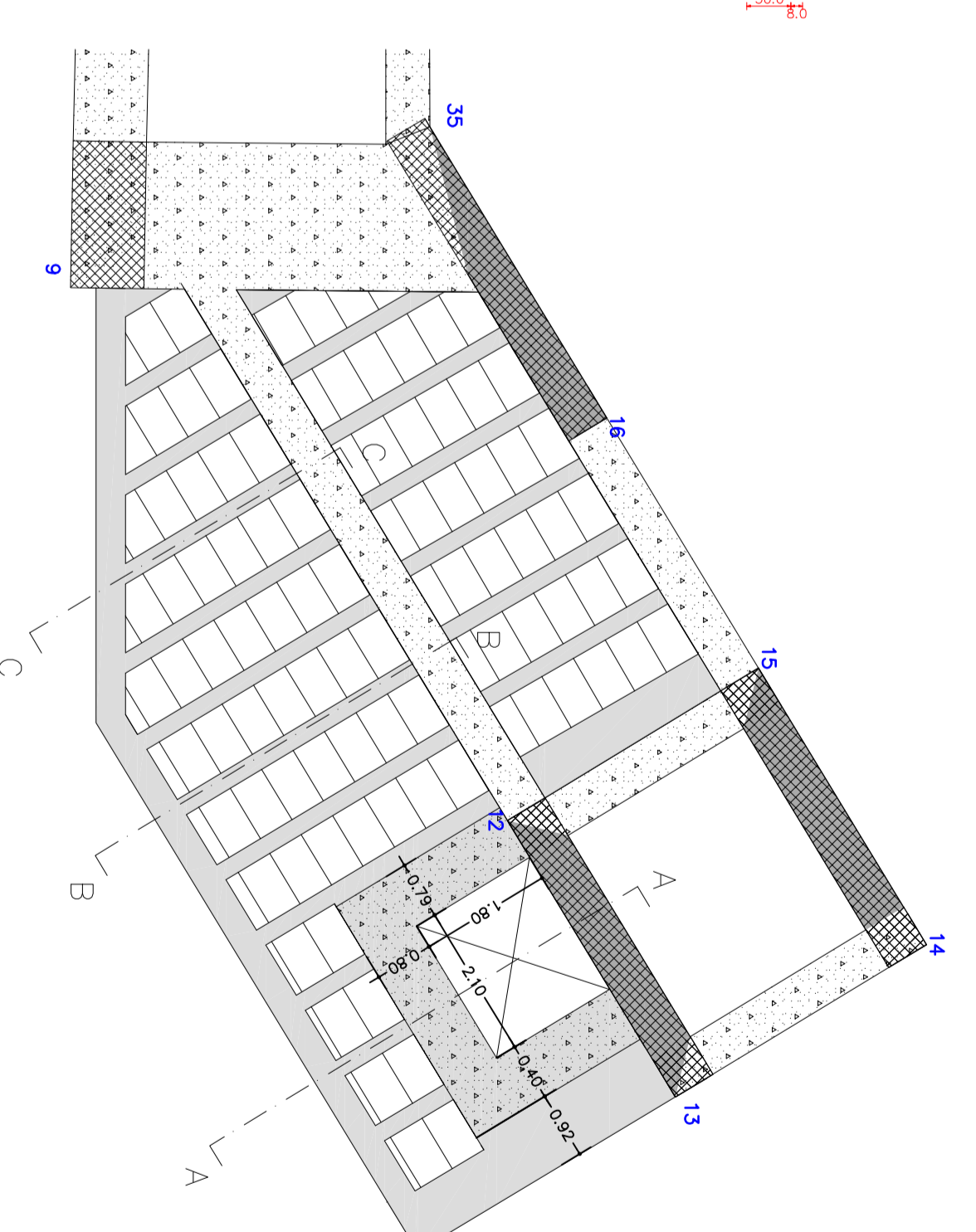
PARTICOLARE TRAVE PORTA TAMPONATURA



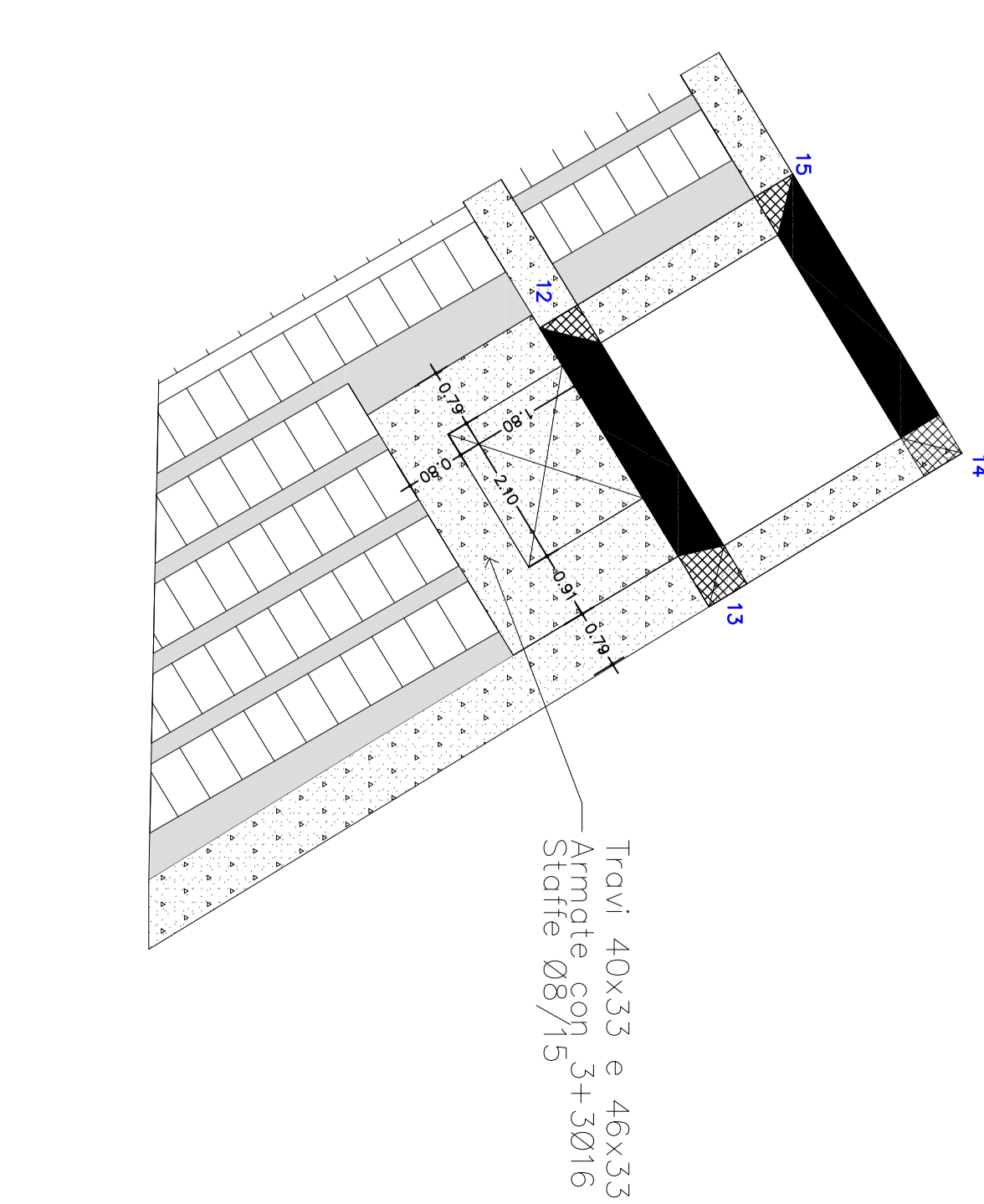
Particolare Plancherotti Liv.1



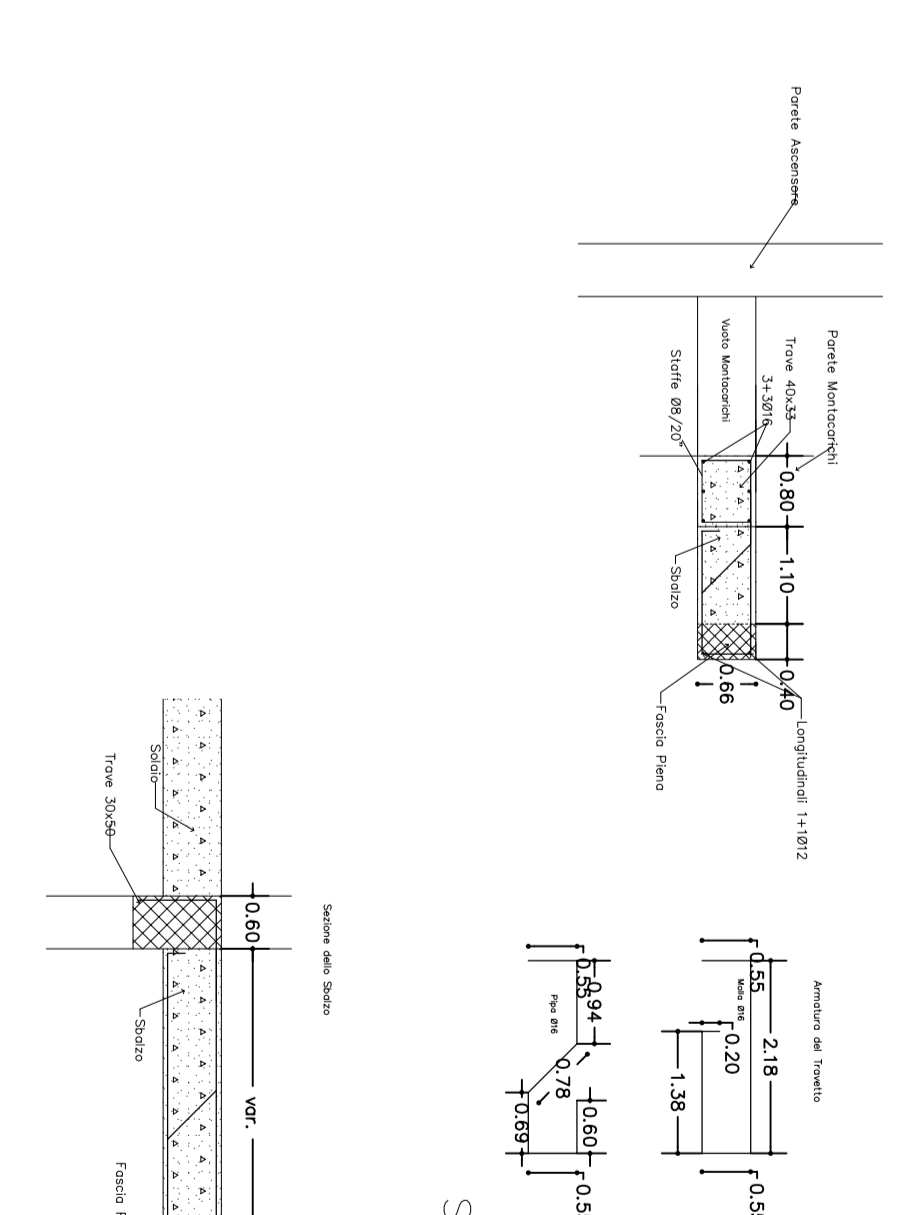
PARTICOLARE SBALZO



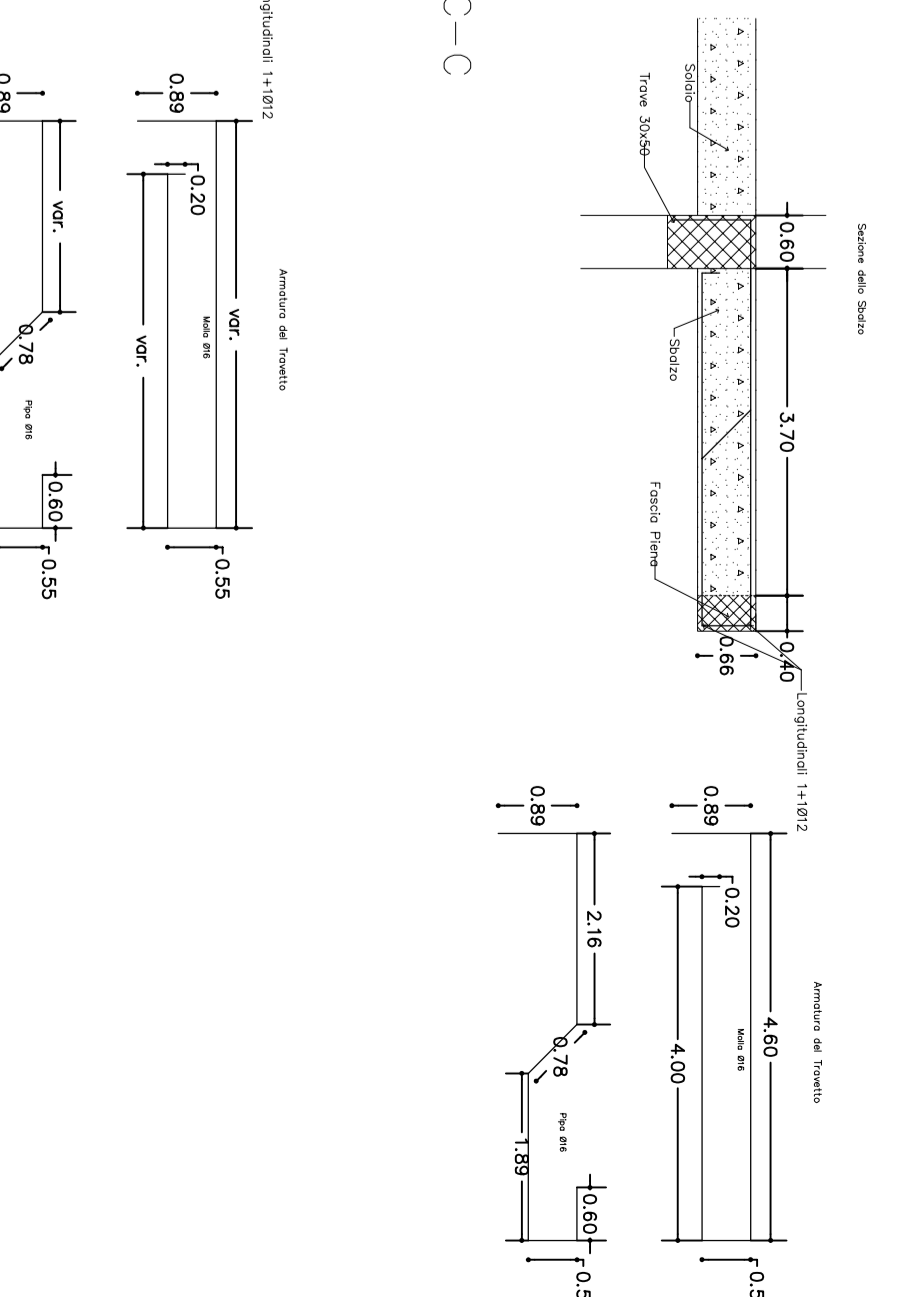
PARTICOLARE TRAVI CORONAMENTO MONTACARICHI INTERNO



SEZIONE A-A



SEZIONE B-B



SEZIONE C-C

