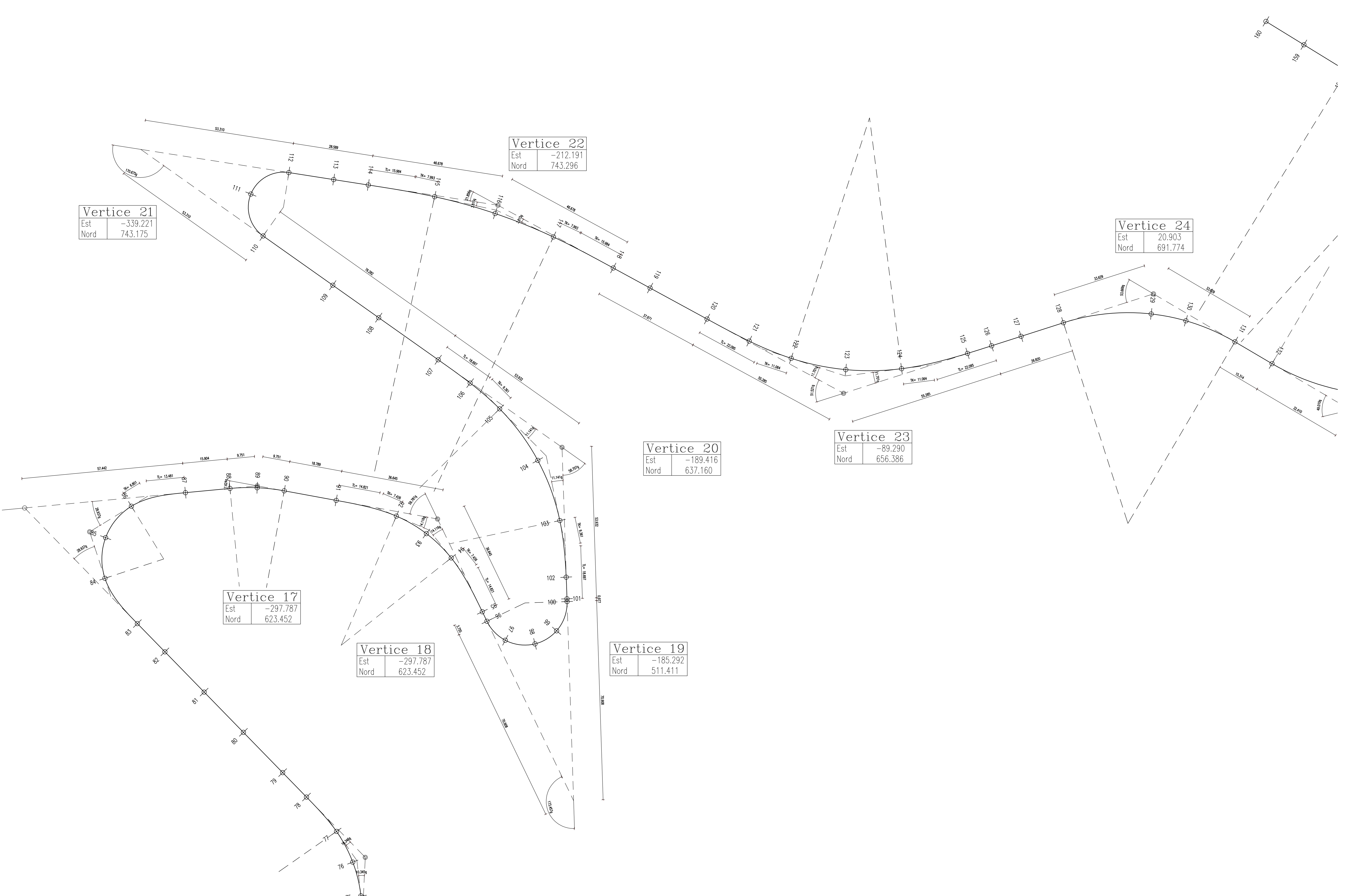


VERTICE 17				VERTICE 18				VERTICE 19				VERTICE 20				VERTICE 21				VERTICE 22			
XT1 = -307.494	XV = -297.787	XT2 = -288.196	XT1 = -269.718	XV = -233.679	XT2 = -217.749	XT1 = -216.117	XV = -185.292	XT2 = -187.616	XT1 = -187.648	XV = -189.416	XT2 = -233.439	XT1 = -295.706	XV = -339.221	XT2 = -286.552	XT1 = -298.307	XV = -212.191	XT2 = -171.194						
YTI = 625.529	YV = 623.452	YTC2 = 621.687	YTI = 618.265	YV = 611.651	YTC2 = 617.459	YTI = 575.268	YV = 511.457	YTC2 = 582.281	YTI = 583.657	YV = 637.160	YTC2 = 668.314	YTI = 712.380	YV = 743.175	YTC2 = 734.933	YTI = 730.513	YV = 723.226	YTC2 = 700.977						
SVC1 = 0.000	AV = 182.2763	SVC2 = 0.000	SVC1 = 26.174	AV = 140.2186	SVC2 = 26.174	SVC1 = 0.000	AV = 26.5431	SVC2 = 0.000	SVC1 = 28.000	AV = 141.2939	SVC2 = 28.000	SVC1 = 0.000	AV = 29.3248	SVC2 = 0.000	SVC1 = 23.971	AV = 178.1437	SVC2 = 23.971						
XTCI = -307.494	AD = 17.6237	XTCI = -288.196	XTCI = -240.313	AD = 59.9814	XTCI = -228.812	XTCI = -216.117	AD = 173.4569	XTCI = -187.616	XTCI = -190.192	AD = 98.7061	XTCI = -211.594	XTCI = -295.706	AD = 170.6752	XTCI = -286.552	XTCI = -224.707	AD = 21.8563	XTCI = -192.469						
YTC1 = 625.529	KC = -300.868	YTC2 = 621.687	YTC1 = 618.665	KC = -267.958	YTC2 = 597.812	YTC1 = 575.268	KC = -202.608	YTC2 = 582.281	YTC1 = 611.103	KC = -268.471	YTC2 = 650.859	YTC1 = 712.380	KC = -288.485	YTC2 = 734.933	YTC1 = 726.335	KC = -277.407	YTC2 = 712.014						
AC1 = 0.000	HC = 532.843	AC2 = 0.000	AC1 = 33.297	HC = 566.705	AC2 = 33.297	AC1 = 0.000	HC = 581.789	AC2 = 0.000	AC1 = 47.329	HC = 594.600	AC2 = 47.329	AC1 = 0.000	HC = 722.583	AC2 = 0.000	AC1 = 69.240	HC = 530.947	AC2 = 69.240						
R = 70.000	R = 70.000	R = 70.000	R = 70.000	R = 50.000	R = 50.000	R = 15.000	R = 15.000	R = 15.000	R = 90.000	R = 90.000	R = 12.500	R = 12.500	R = 12.500	R = 12.500	R = 200.000	R = 200.000	R = 200.000						
SVRC = 19.378	SVRC = 19.378	SVRC = 19.378	SVRC = 19.378	SVRC = 24.778	SVRC = 24.778	SVRC = 40.870	SVRC = 40.870	SVRC = 40.870	SVRC = 45.772	SVRC = 45.772	SVRC = 33.512	SVRC = 33.512	SVRC = 33.512	SVRC = 44.693	SVRC = 44.693	SVRC = 44.693	SVRC = 44.693						
SVL = 19.378	SVL = 19.378	SVL = 19.378	SVL = 19.378	SVL = 69.126	SVL = 69.126	SVL = 40.870	SVL = 40.870	SVL = 40.870	SVL = 101.772	SVL = 101.772	SVL = 33.512	SVL = 33.512	SVL = 33.512	SVL = 33.512	SVL = 92.635	SVL = 92.635	SVL = 92.635						

VERTICE 23				VERTICE 24			
XT1 = -137.845	XV = -89.290	XT2 = -36.652	XT1 = -111.116	XV = 20.903	XT2 = 49.879		
YTI = 682.821	YV = 656.386	YTC2 = 673.290	YTI = 681.491	YV = 691.774	YTC2 = 674.707		
SVC1 = 33.084	AV = 148.4790	SVC2 = 33.084	SVC1 = 0.000	AV = 146.3310	SVC2 = 0.000		
XTCI = -107.920	AD = 51.5210	XTCI = -89.664	XTCI = -111.116	AD = 53.6690	XTCI = 49.879		
YTC1 = 682.821	KC = -80.058	YTC2 = 665.134	YTC1 = 681.491	KC = 11.816	YTC2 = 674.707		
AC1 = 54.567	HC = 754.410	AC2 = 54.567	AC1 = 0.000	HC = 610.083	AC2 = 0.000		
R = 90.000	R = 90.000	R = 90.000	R = 90.000	R = 75.000	R = 75.000		
SVRC = 39.752	SVRC = 39.752	SVRC = 39.752	SVRC = 39.752	SVRC = 63.227	SVRC = 63.227		
SVL = 105.920	SVL = 105.920	SVL = 105.920	SVL = 105.920	SVL = 63.227	SVL = 63.227		





Provincia di Chieti
Settore Lavori Pubblici

PROGETTO COMPLETAMENTO

LAVORI DI SISTEMAZIONE STRADA PROVINCIALE S.S. 650
FONDO VALLE TRIGNO SCHIAVI D'ABRUZZO

III° Lotto Funzionale

PLANIMETRIA DI TRACCIAMENTO 3 DI 4
DA VERTICE 17 A VERTICE 24

 STUDIO MONTEPARA Via S. Maria 12 66030 Montepara (Ch) Tel. 0872/29442 Email: montepara@montepara.it	Il Progettista Prof. Ing. Antonio Montepara 	TAVOLA 7.3
Questo elaborato, non può essere riprodotto né modificato, né in parte, né integralmente, in nessun modo, senza il permesso scritto della 127 E T I I A 07.03/RO		Responsabile Unico del Procedimento SCALA : 1:500 DATA : 17/03/2014

Revisione	Data	Descrizione	Redatto	Controllato	Approvato
REV.0					
REV.1					
REV.2					