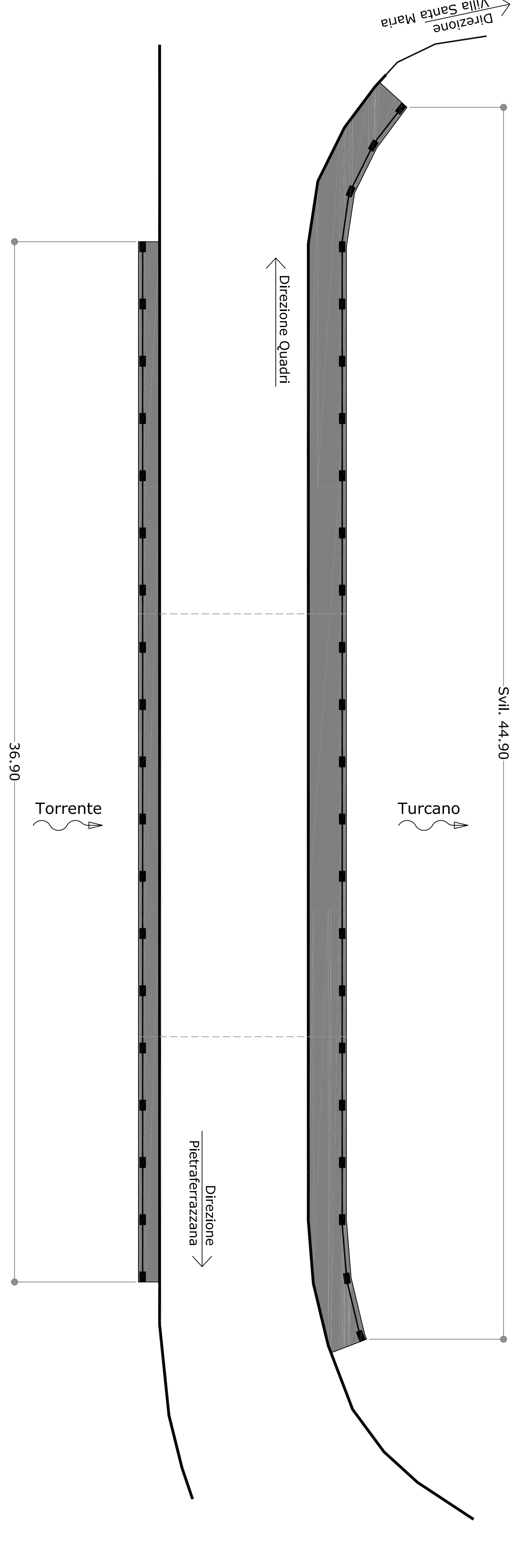
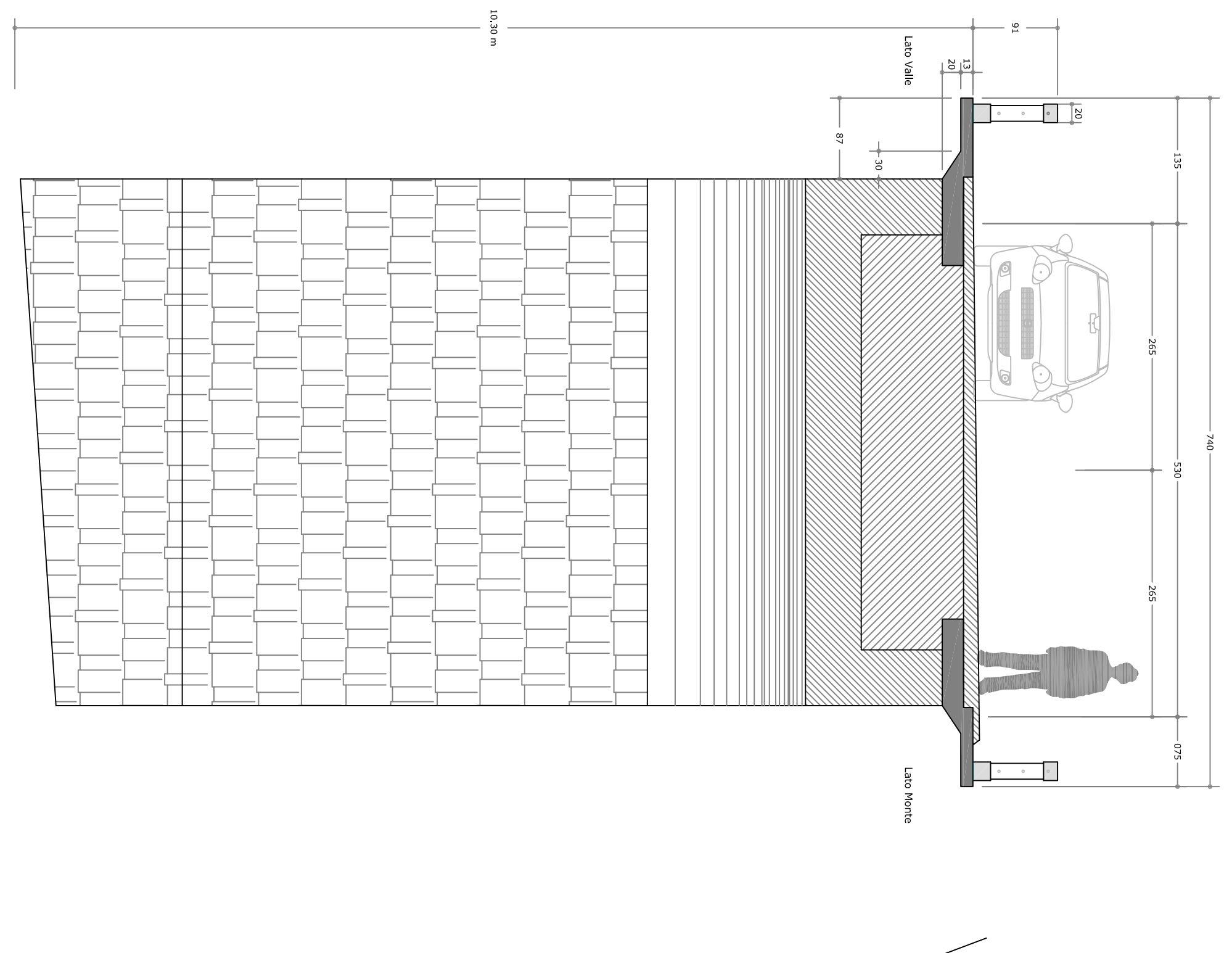


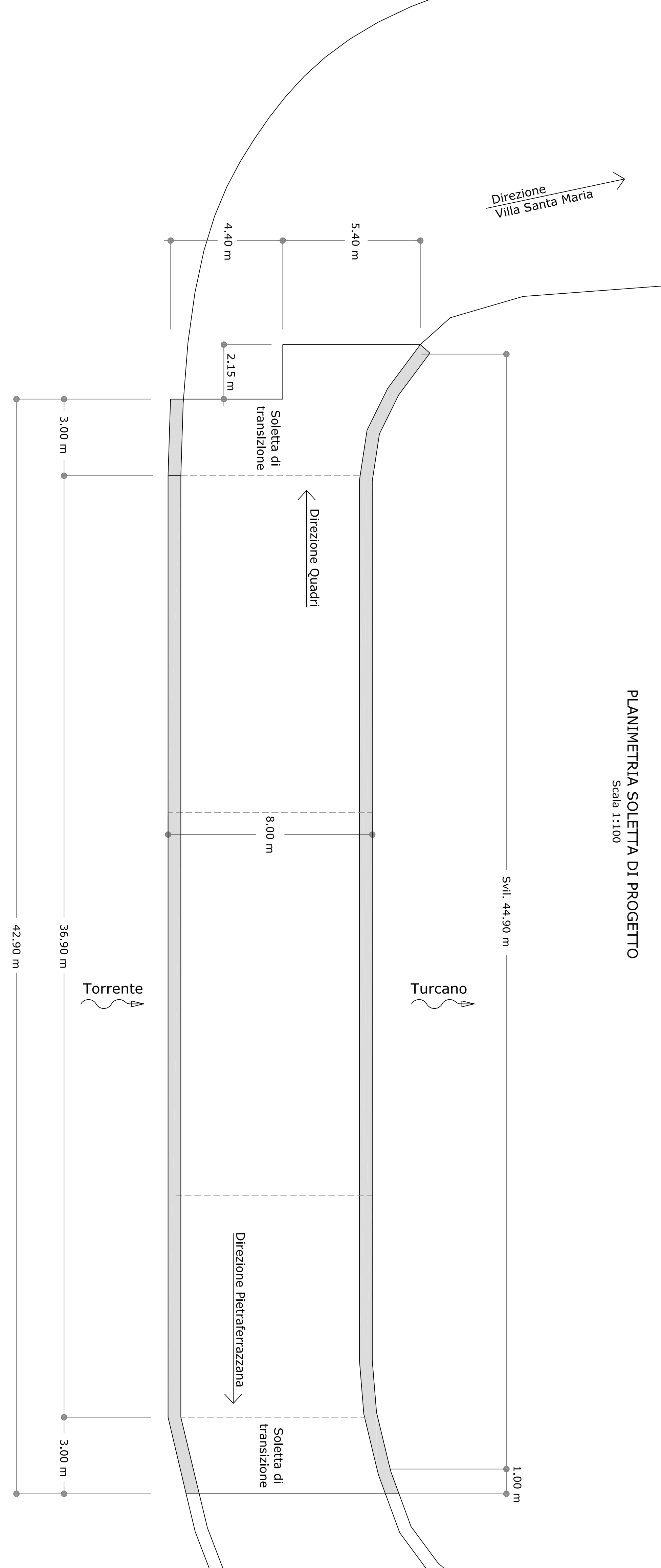
PLANIMETRIA - STATO DI FATTO
 Scala 1:100



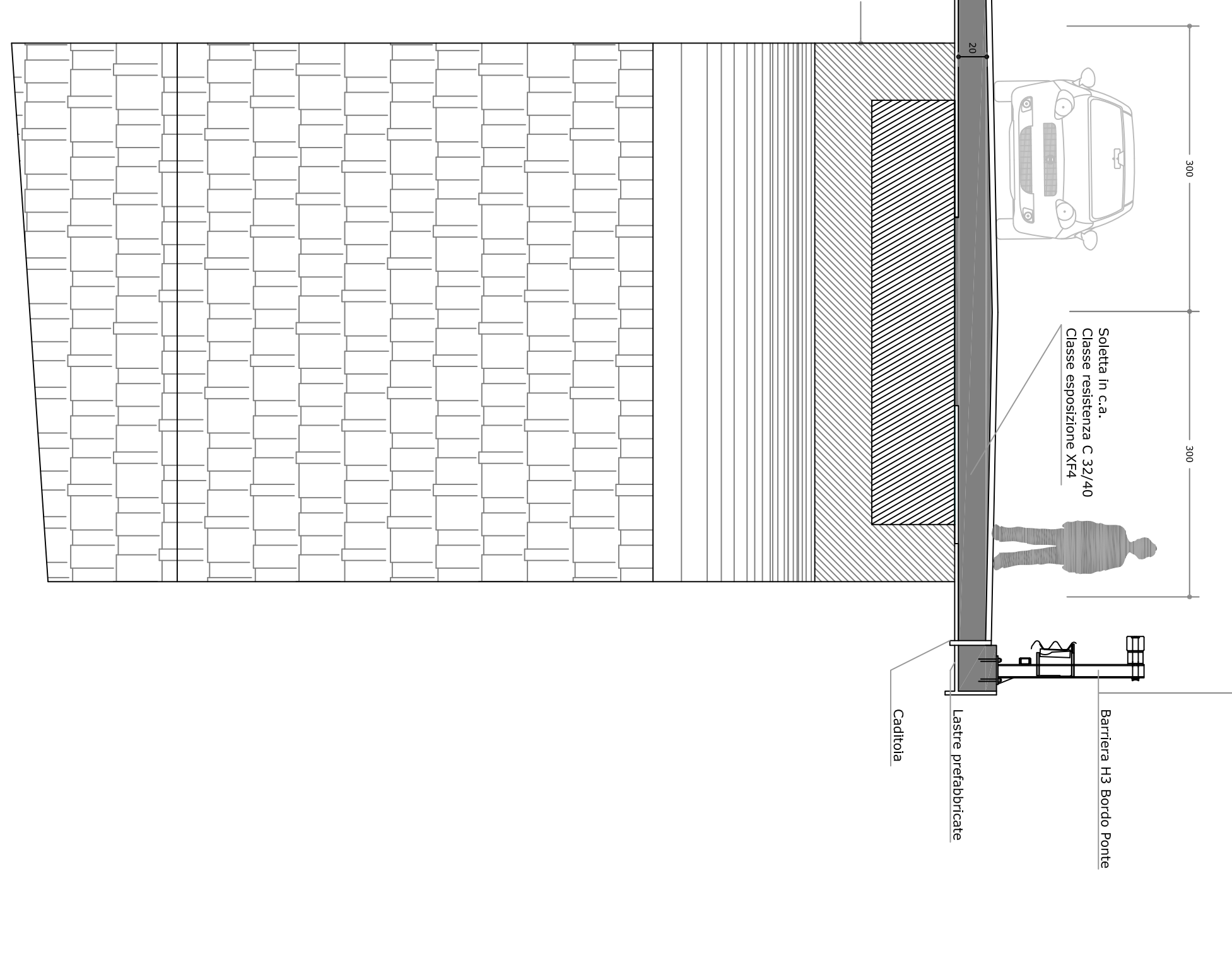
STATO DI FATTO
SEZIONE TRASVERSALE IMPALCATO Scala 1:150



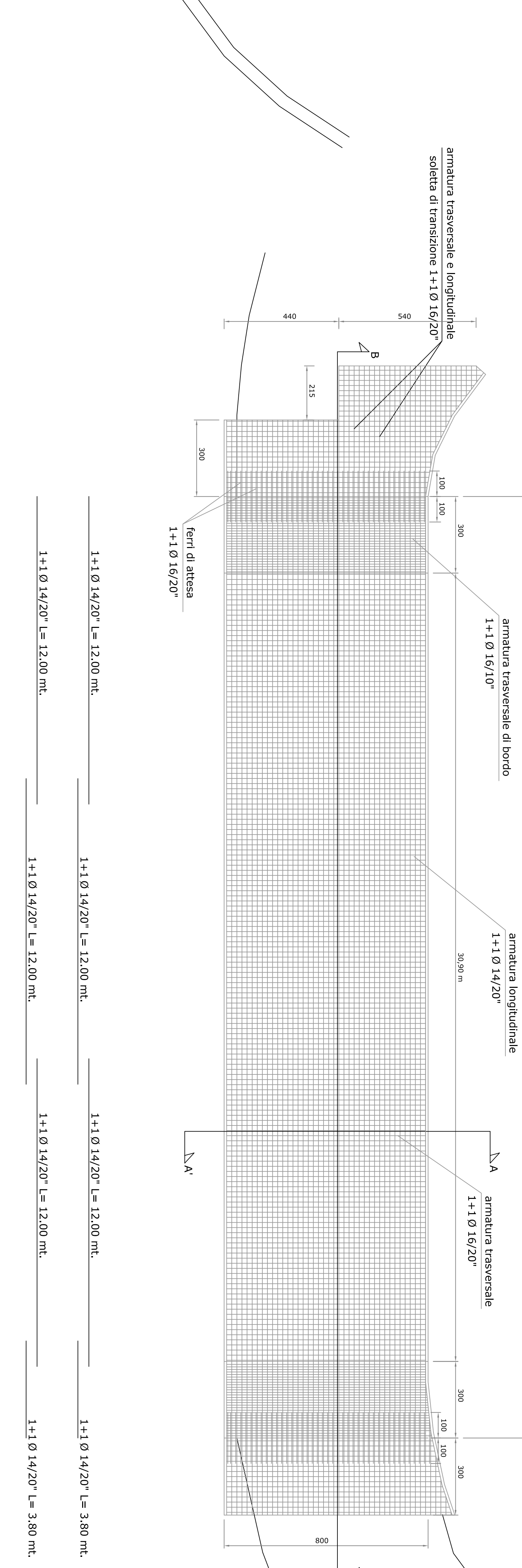
PLANIMETRIA SOLETTA DI PROGETTO
 Scala 1:100



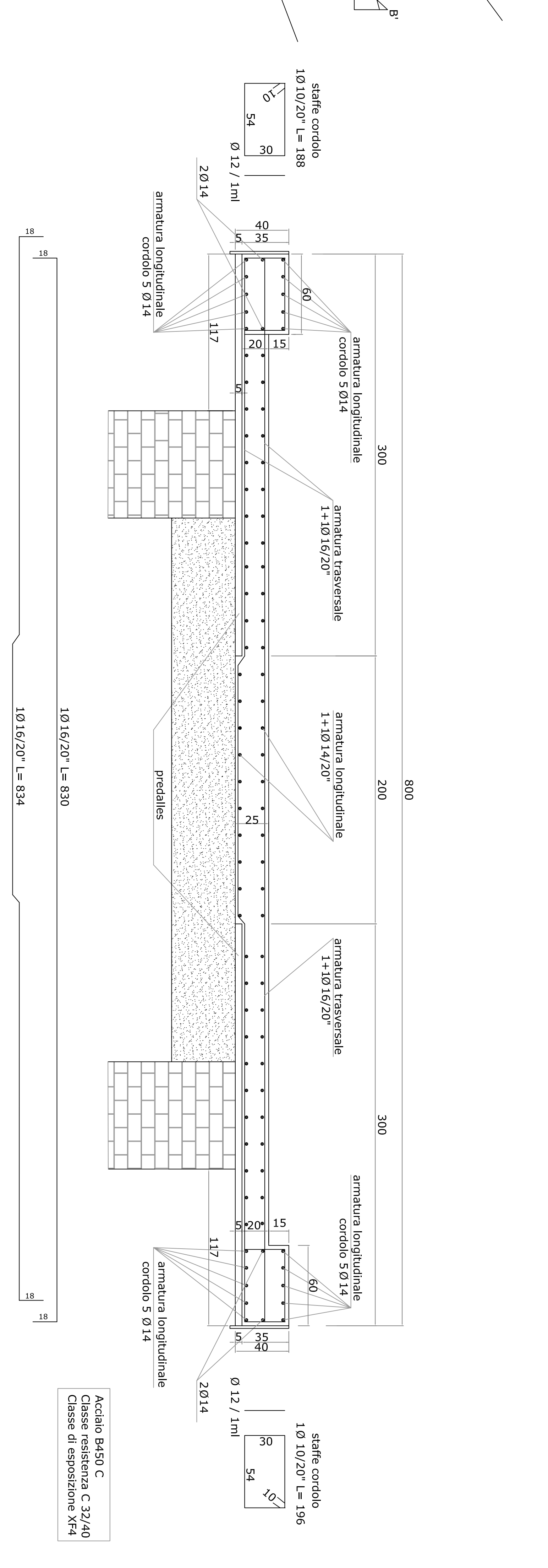
SEZIONE DI PROGETTO Scala 1:150



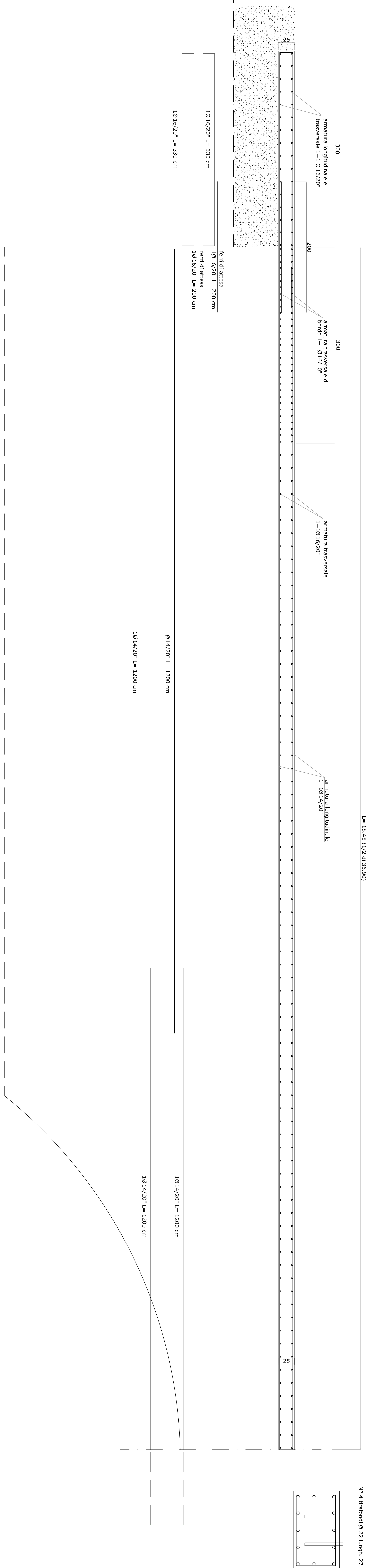
CARPENTERIA PONTE Scala 1:150



SEZIONE A-A trasversale
 Scala 1:150



SEZIONE B-B longitudinale (mezzaria)
 Scala 1:150



ANCORAGGIO BARRIERA DI SICUREZZA H3
CORDOLO PONTE

